

FUNDER TO FUNDER CALL: SHARING APPROACHES TO COVID-19 COMMUNITY RESPONSE

How philanthropy is responding locally and globally to the outbreak of coronavirus

HOUSEKEEPING ITEMS

For Telephone Participants: If you are using the telephone to listen to the call, please make sure to use a landline to ensure audio clarity.

Access the Help Desk: Select the “Help” option in the toolbar at the top of your GoToWebinar navigation panel or email webinars@cof.org

Ask a Question of the Presenters: Click the “Q&A” icon to type a question for the presenters or email webinars@cof.org. All Questions will be answer at the end of the call.

Exit the Call: Click the gray “X” in upper right corner of the gray webinar navigation bar.

Call Recording: A recording of this call will be made available on the event page within a couple days. Please visit www.cof.org/events/webinar-archive for the full recording.



Welcome & Agenda

Facilitator:



Stephanie Powers,

Senior Advisor for Public Policy & Partnerships

Council on Foundations

1. COVID-19 Today

2. Funders on the Front Lines: Community Foundations

Seattle Foundation, Berks County Community Foundation (PA), New York Community Trust

3. Grantmaking and Public Health Response: Locally and Globally

Medtronic Foundation, Robert Wood Johnson Foundation, Bill and Melinda Gates Foundation

4. Public-Private Partnerships, Coordinated Response Locally and Globally

Council on Foundations

5. Q&A

March 12, 2020

Speakers

Leticia Babcock

Program Manager,
Volunteer Engagement

Medtronic Foundation

Paurvi Bhatt

President

Medtronic Foundation

Irfan Hasan

Program Director, Health
and Behavioral Health

***The New York Community
Trust***

Kris Hermanns

Chief Impact Officer

Seattle Foundation

Julie Morita, MD,

Executive Vice President

***Robert Wood Johnson
Foundation***

Kevin K. Murphy

President and CEO

***Berks County Community
Foundation***

Victoria Vrana

Deputy Director, Philanthropic
Partnerships

***Bill and Melinda Gates
Foundation***

Brad Ward

Lead Strategist, Community
Philanthropy

Council on Foundations

March 12, 2020

COVID-19 Today

- Landscape Assessment of COVID-19 Today
- Messaging from CDC, Other Agencies
- Importance of tone & communicating around this health crisis
- The Council's COVID-19 Resource Hub
- Philanthropy's Response

Funders on the Front Lines: Community Foundations



Kris Hermanns
Chief Impact Officer

Seattle Foundation



Kevin K. Murphy
President and CEO

***Berks County
Community Foundation***



Irfan Hasan
Program Director, Health
and Behavioral Health

***The New York
Community Trust***

Seattle Foundation | COVID-19 Response Fund

What is it?

- The COVID-19 Response Fund was established to rapidly deploy resources to trusted community-based organizations (CBOs) working on the frontlines of the region's coronavirus outbreak
- Cross sector approach proving that working together in dynamic times is critical
- Complements the work of public health officials and expands local capacity to address the outbreak's social, health and economic impacts
- Current investment from philanthropic, public and business partners is \$7.2M



Seattle Foundation | COVID-19 Response Fund

What is the focus of the Fund?

- We are providing general operating grants to CBOs with deep roots in community and strong experience with those most impacted by the crisis:
 - Residents without health insurance and/or access to paid sick leave
 - People with limited English language proficiency
 - Healthcare and gig economy workers
 - Communities of color, among others
- The first phase of grants will leverage relationships with CBOs in disproportionately affected communities that are working to address:
 - The economic impact of reduced and lost work
 - Immediate needs of economically vulnerable populations caused by COVID-19 related closures
 - Increased demand for medical information and support
 - Fear and confusion among the most vulnerable residents
- Given the dynamic nature of this moment, the Fund intends to provide grants on a rolling basis and adapt to changing circumstances from acute immediate needs to longer term recovery.



Seattle Foundation | COVID-19 Response Fund

Who is involved?

- A group of cross-sector lead partners have come together to establish and support the fund—
Philanthropic Partners: Connie and Steve Ballmer, Bezos Family Foundation, Perigee Fund, Philanthropy Northwest, Raikes Foundation, Satterberg Foundation, Seattle Foundation, Social Venture Partners, United Way of King County. Public Partners: King County, City of Seattle. Private Partners: Alaska Airlines, Amazon, BECU, Costco, JPMorgan Chase & Co., Microsoft, Premera Blue Cross, The Starbucks Foundation.

How will grantmaking decisions get made?

- Seattle Foundation will administer the grants
- In line with the Fund's priorities, partners will inform grantmaking criteria and amplify what they are hearing from community partners impacted by COVID-19
- SeaFdn and United Way of KC will work in close collaboration with King County's Pandemic Community Advisory Group to ensure that both the scope of the Fund and the grants awarded meet the greatest needs in communities disproportionately impacted by the outbreak.
 - The Community Advisory Group is made up of diverse leaders from across the County and ensures a commitment to greater racial and economic equity throughout the Fund's efforts.
- The grantmaking process and selection criteria are under development and will be influenced by fund size and number of contributors



Seattle Foundation | COVID-19 Response Fund

What should my community do?

Every community faces different challenges and opportunities. At Seattle Foundation, here are a few reflections from the outbreak to today:

- **Events Move Quickly:** Follow and listen to community, step into be a convener and partner. Be nimble and responsive and listen to the best science from health officials.
- **Partnerships are Key:** Reach out early to those public, private, and philanthropic organizations with whom you have relationships; resist the urge to go it alone. A collective effort will be more successful and sends a strong signal to the community.
- **Complement Ongoing Responses:** No one fund or organization can address the scale of this challenge. Try to find where the greatest current need is and build in flexibility to allow priorities to evolve as the region adapts to the outbreak.
- **Plan for Internal Capacity:** The need in the community will be great and relationship management is robust. This requires thoughtful, empathetic, and responsive communication. Set up a catch-all intake for inquiries and designate members of your team to help answer them. Moreover, this crisis affects all of us, including our own team members. Within permissible privacy concerns, start planning backup support now for those who have children in school or parents in care.
- **Recognize the Long-Term Nature of this Challenge:** The communities disproportionately impacted by the coronavirus outbreak are likely to already be facing persistent health and economic disparities. Crisis philanthropy recognizes the need to provide immediate resources for triage, as well as recovery resources to ensure community resilience.



Funders on the Front Lines: Community Foundations



Kevin K. Murphy
President and CEO

***Berks County
Community Foundation***

Funders on the Front Lines: Community Foundations



Irfan Hasan

Program Director, Health
and Behavioral Health

***The New York
Community Trust***

Grantmaking and Public Health Response: Locally and Globally



Paurvi Bhatt
President

***Medtronic
Foundation***



Leticia Babcock
Program Manager,
Volunteer
Engagement

***Medtronic
Foundation***



Victoria Vrana
Deputy Director,
Philanthropic
Partnerships

***Bill and Melinda Gates
Foundation***



Julie Morita, MD,
Executive Vice
President

***Robert Wood Johnson
Foundation***

Medtronic Foundation

ADVANCING GLOBAL HEALTH



EMPOWERING HEALTH WORKERS

DEEPENING CIVIC ENGAGEMENT



ENGAGING EMPLOYEES



INVESTING IN COMMUNITIES

With roots in the world's largest medical technology company, the Medtronic Foundation has an opportunity and a responsibility to be a leader on global issues impacting health.

Learnings from West Africa Ebola Response

Follow
WHO/CDC
signals of
severity

Build initial
response to be
locally relevant
in high impact
areas and
positioned for
global spread

Support a mix
of credible
organizations
in infectious
diseases,
disaster relief
organizations,
and local
community
health

Be ready for
company site
specific
responses -
engage
employees

Provide
support in
phases –
immediate and
long term

Our COVID 19 Response:

Medtronic Foundation & Medtronic PLC

Phase I

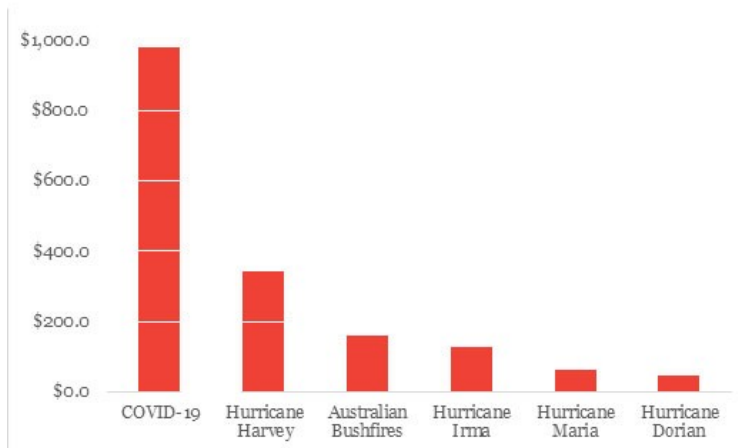
Medtronic Foundation	Employee Engagement <ul style="list-style-type: none"> Giving campaign <ul style="list-style-type: none"> volunteer and giving web platform: 1:1 match, \$10 minimum; pivoting volunteerism: virtual skills-based opportunities 	Partner Engagement <ul style="list-style-type: none"> Aligning needs <ul style="list-style-type: none"> local philanthropy liaisons, business and regional colleagues, and others 	NGO Engagement <ul style="list-style-type: none"> Partnerships and grants <ul style="list-style-type: none"> IFRC, Project Hope, and CDC Foundation discussions on preparedness & long term health needs
	Product Donations <ul style="list-style-type: none"> Severe respiratory illness products <ul style="list-style-type: none"> ventilators, respiratory filters, and pulse oximeters and sensors 	Corporate Crisis Team & Community Workstream <ul style="list-style-type: none"> Aligning with internal stakeholders <ul style="list-style-type: none"> discuss response, business and employee impacts, communications needs, and response efforts 	Health and Safety of Employees <ul style="list-style-type: none"> Support to employees in hardship <ul style="list-style-type: none"> employee emergency assistance fund regular communication; contact with local health authorities for the most current information

Impact measures: # of people impacted (e.g. people who use PPE), # of health workers equipped, # of patients tested by health workers, # of health departments/facilities assisted

PHILANTHROPIC RESPONSE

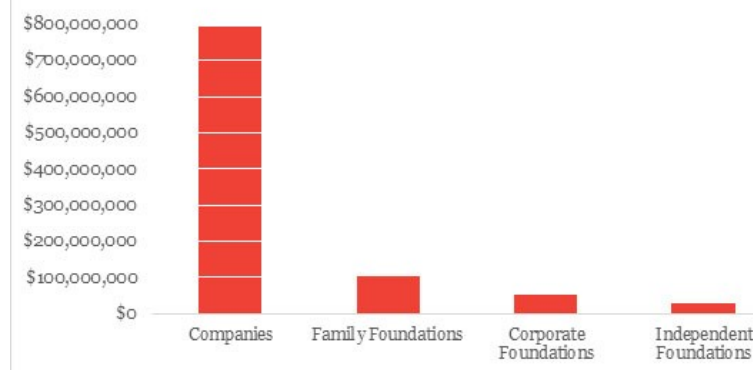
IMMENSE RESPONSE

Philanthropic funding for recent disasters



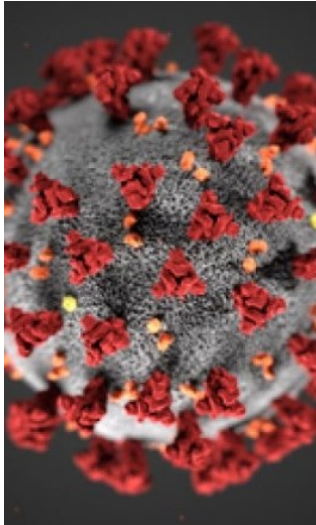
DRIVEN BY COMPANIES

Funders by type



UPDATE: AS OF MARCH 10, TOTAL GIVING HAS INCREASED FROM \$980 MILLION TO \$1.3 BILLION

GIVING TOPPING 1B AROUND THE WORLD

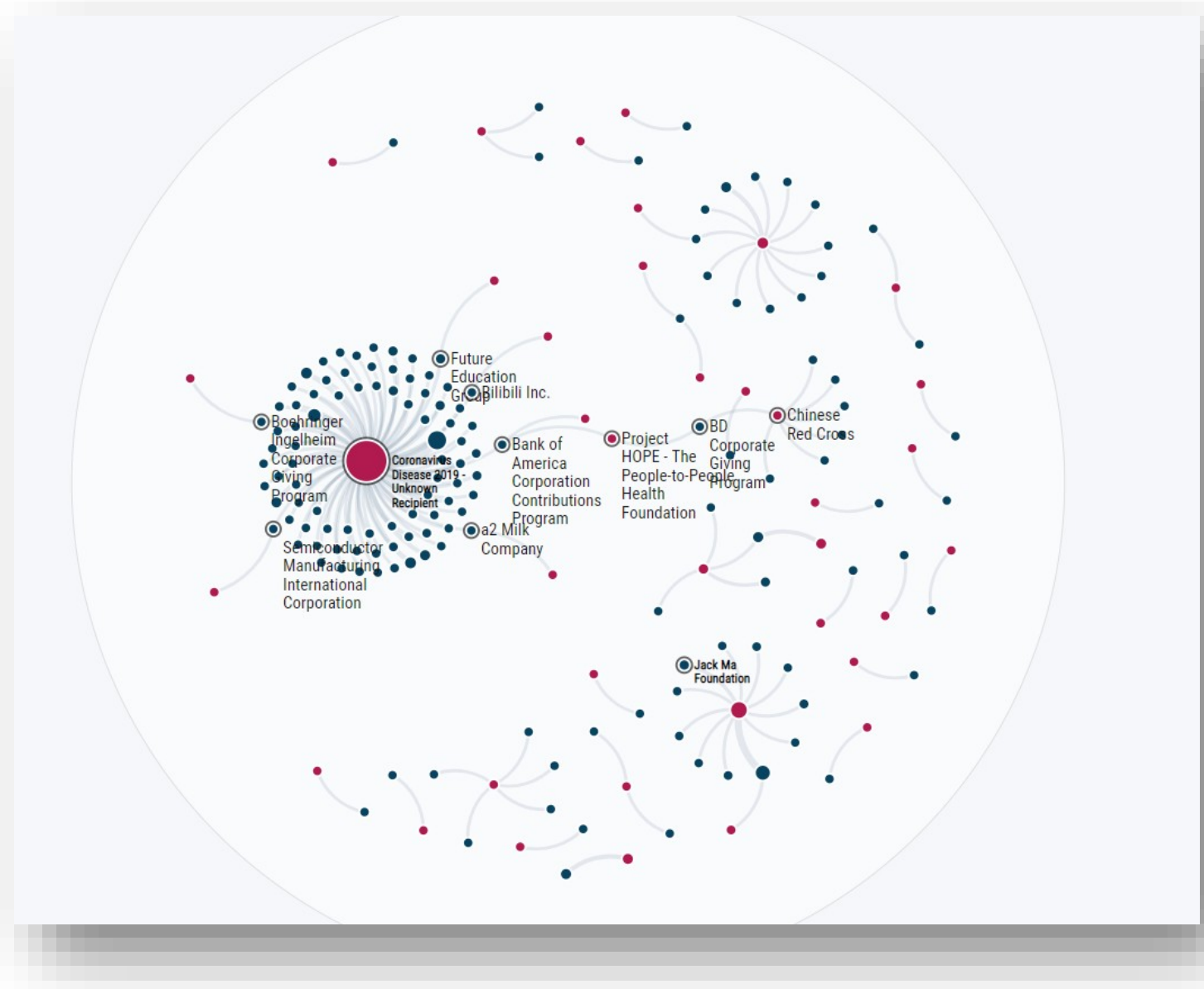


UPDATE: THE NUMBER OF PLEDGES FROM SOUTH KOREA HAS GROWN FROM 3 PLEDGES TO 9, RAISING THE TOTAL FROM THAT COUNTRY FROM \$6.2 MILLION TO \$46.7 MILLION.

Country/SAR	Grants	Amount (USD)
China	68	\$728,717,361
United States	66	\$182,323,780
Hong Kong	11	\$32,218,724
United Kingdom	3	\$8,419,120
Macao	3	\$6,240,000
South Korea	3	\$6,200,600
France	4	\$5,717,530
Japan	7	\$4,326,000
Germany	3	\$1,892,100
Australia	2	\$1,586,200
New Zealand	2	\$1,339,842
Austria	1	\$432,600
Singapore	2	\$357,500
Italy	1	\$144,200
TOTAL	176	\$979,915,557

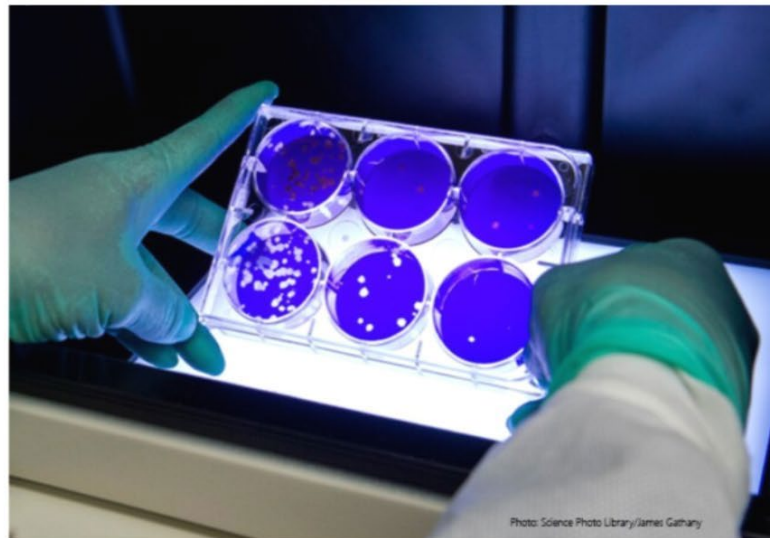
CANDID MAPS

Most pledges
have not
come with a
designated
recipient
([link](#))



GATES FOUNDATION RESPONSE

- \$105M for COVID-19 efforts to date
- \$60M focused on R&D and diagnostics for low income countries; \$40M on health system support in Africa & S Asia; \$5M Seattle
- \$125M Therapeutics Accelerator this week (BMGF, Wellcome Trust, and Mastercard)
- GPP establishing a COVID-19 fund



Announcing the COVID-19 Therapeutics Accelerator

The first time I ever wrote about global health was an article on the looming AIDS crisis in my native South Africa. My piece for the *Johannesburg Star* in 1991 reported dire predictions from experts about the potential of an epidemic. A major cause for pessimism was that, back then, HIV/AIDS could not be prevented or treated medically.

Share



About the Author



By Mark Suzman

Mark Suzman, the CEO of the Bill & Melinda Gates Foundation, leads the foundation's efforts to promote equity for all people around the world.

More Stories Like This



Grantmaking and Public Health Response: Locally and Globally



Julie Morita, MD,
Executive Vice President
Robert Wood Johnson Foundation

Public-Private Partnerships, Coordinated Response Locally and Globally



Stephanie Powers

Senior Advisor for Public Policy &
Partnerships

Council on Foundations

Questions & Answers

Visit the Council's
Coronavirus Resource Hub
www.cof.org/news/covid-19-resource-hub

Continue The Conversation

Council Survey – Share your efforts

<https://www.cof.org/page/share-response-covid-19>

Philanthropy Exchange

<https://exchange.cof.org/home>

Connect with Council

educate@cof.org

